

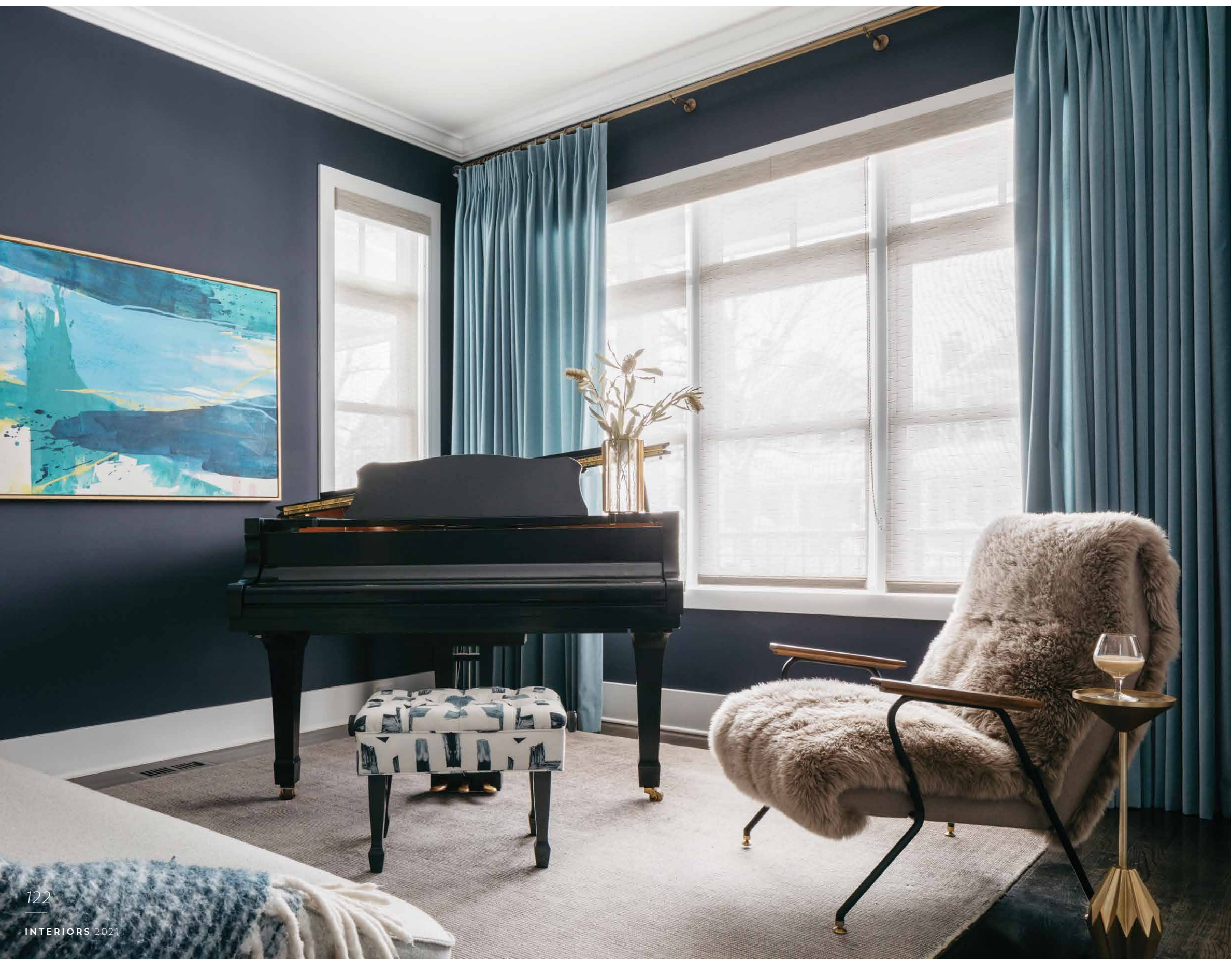
ONE TO GROW ON

*Interior designer
Taryn Bickley
steps up to
transform a new
North Center
build into the
home of a
growing young
family's dreams.*

*By J.P. Anderson
Photographed by
Margaret Rajic*

Chic accents abound in the family room, with a macramé floor rug from Serena & Lily, a custom channeled ottoman in Osborne & Little vinyl ("It looks 100% like leather," notes Bickley) and a sectional by Room & Board.





THE CLIENT

For some design projects, an interior designer is there from the start. For others, the designer is the creative force who swoops in to the rescue midprocess—which was the case with a new North Center home recently finished by Bickley & Co Design for a couple with one child and another on the way (and now parents of a third). “They had worked with their builder on creating a home that was functional and family-friendly,” notes founder Taryn Bickley, “but after the initial decisions on tile, stone and paint they were stumped.” They turned to Bickley to make design magic happen and turn the sparsely furnished abode into a home the family could grow into.

THE PRIORITY

“They wanted a place that was functional and open but had natural separations,” notes Bickley. “They wanted some accents and elements of impact—including a baby grand piano in the living room—but were most concerned that the spaces were entirely kid-friendly. They wanted longevity with their choices, not furniture or art that they’d have to replace in two to three years. They created a blank slate that called for some personal expression, and that’s what we were able to offer.”

Clockwise from left: The clients’ baby grand piano takes pride of place in the living room along with a faux fur armchair by Anthropologie, with commissioned wall art by Anne Abueva (anneabueva.com); custom record cabinets by Brooklyn furniture designer Jennifer Levin Atocha provide perfect storage for their collection of 1,000-plus records; the clients’ own books are complemented by accessories from Crate & Barrel (the speckled pot) and Neybir (all else).



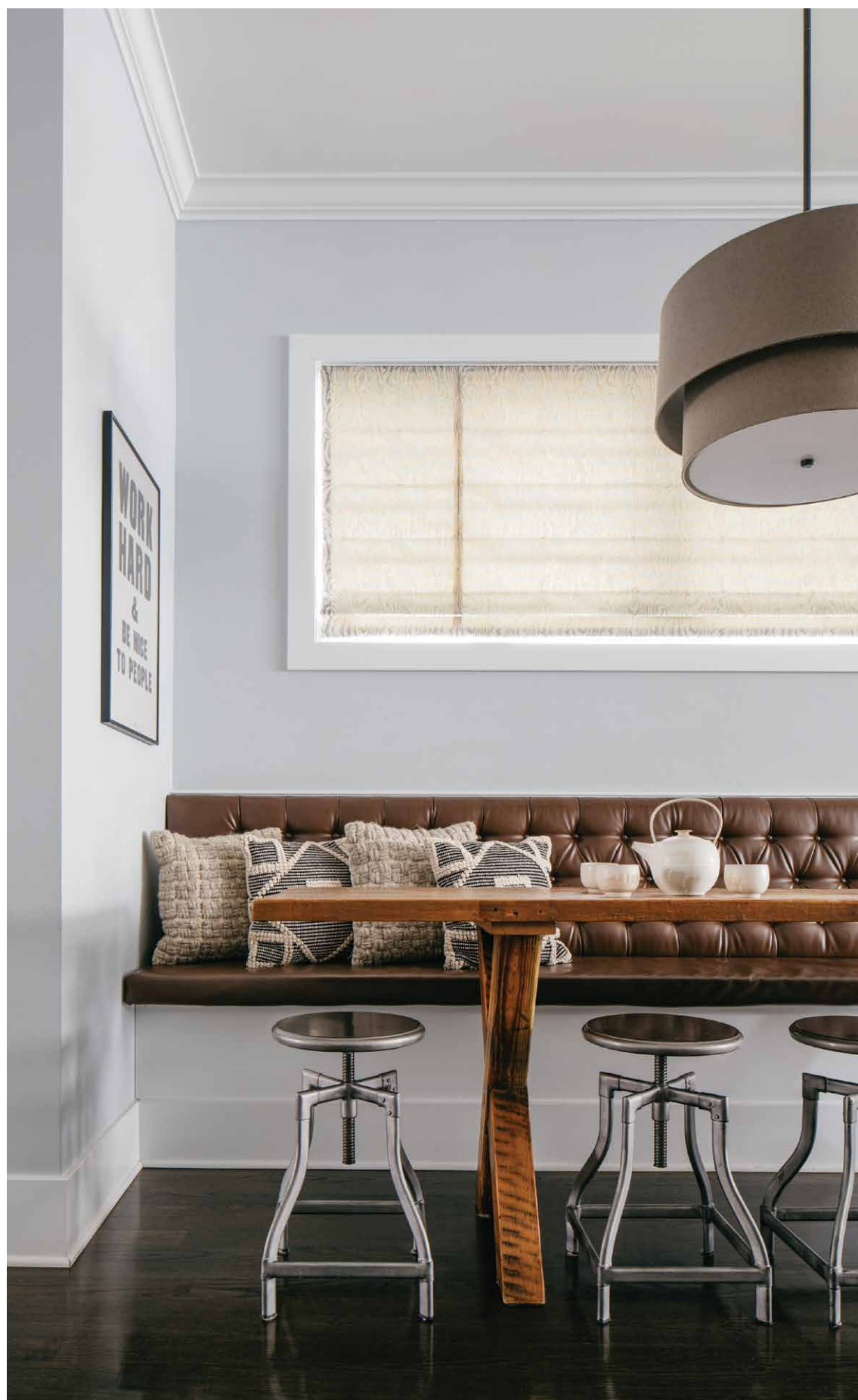


THE CHALLENGE

Oftentimes, the biggest challenges are in the details, and that was the case here. “We had a hard time finding a rug for the living room,” notes Bickley. “We tried countless vintage options, and there just wasn’t anything that fit the feel of the space and palette. They also have a large piano, which we had to work around. We ended up with a neutral Restoration Hardware rug that didn’t detract from the other areas of the space.” The fireplace also proved a design quandary: “We struggled with the balance of the two walls on either side of the fireplace. They had one custom record cabinet made at the time and the other side was empty. It felt entirely off balance but so closely mirrored the other wall that it needed weight and symmetry. After thinking through other furniture options we decided to have a second record cabinet made to match the other and effectively mirror both sides. It worked perfectly—and thank goodness they have it as their vinyl collection has grown to over 1,000 records.”



Clockwise from top left: A lion print purchased from the clients’ safari tour guide on their honeymoon makes for a meaningful visual; the cozy kitchen nook; in the dining room, a Room & Board table, Eames molded plastic chairs by Design Within Reach and pendants by Schoolhouse stand out; a tea set by Swiss-born, Tuscany-based artist Christiane Perrochon; stools by Industry West add warmth to the kitchen.





THE DETAIL

Bickley is justifiably proud of countless touches throughout the home, from the use of wallpapers and textures to the Ligne Roset living room sofa (“It’s so comfy and works well with the lines of their baby grand”) to the multiple references to the couple’s passion for music (“It feels really personal and interesting to me). The pièce de résistance? It just might be the lion print over the dining room console. “It’s so bold and has such energy and impact,” enthuses Bickley. “They purchased this from their safari tour guide on their honeymoon, so they have a memorable piece that is also an interior gem.”

THE OUTCOME

Says Bickley, “The clients were so happy with the evolution of the project. Each room is linked by a shared vibe and sensibility but stands entirely on its own—and it’s truly a livable space; I’ve witnessed their children enjoying every corner, nook and cranny. They say it’s filled with elements of joy that make them very happy and calm. It’s a place they can grow with and evolve in together.” ■

Romo Black Edition wallpaper in Kansai Peacock makes an immediate impression in the entryway. Opposite page: The powder room pops with Lightology sconces and Abstract Leaf wallpaper by Schumacher.



Design Details

TYPE

Single-family home

LOCATION

North Center

BUILDERS/PAINTERS

O'Donnell Builders
odonnellbuilders.com

INTERIORS

Bickley & Co Design
bickleyandco.com

Resources

ANNE ABUEVA

Living room art
anneabueva.com

AMISH CUSTOM KITCHENS

Kitchen cabinetry
amishcustomkitchens.com

JENNIFER LEVIN ATOCHA

Matching custom record cabinets
atochadesign.com

INDUSTRY WEST

Kitchen stools
industrywest.com

LIGNE ROSET

Living room sofa and ottoman
ligne-roset.com

MEGMADE

Family room cabinet/hutch
restoration
megmade.com

MIMSIE O'HARA FABRIC DESIGNS

Family room cabinet/hutch
restoration
630.915.3043

NEYBIR

Various accessories
neybir.com

RESTORATION HARDWARE

Living room rug, various lighting
rh.com

ROMO BLACK EDITION

Entryway wallpaper
blackedition.com

SCHUMACHER

Powder room wallpaper
fschumacher.com

SERENA & LILY

Family room rug
serenaandlily.com