

MODERN LUXURY

NS

THE GIVING ISSUE

From Gift Guides to Philanthropic Pursuits, We Celebrate the Art of Giving

MAN OF THE MOMENT

Ryan Gosling's Timeless Appeal

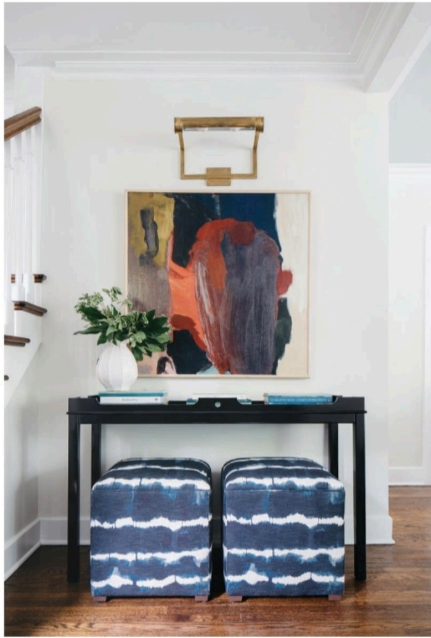


FRESH TRACKS

Streetwear Meets the Slopes at Moncler

North Shore Chic

Interior Designer
Taryn Bickley
Stunningly
Transforms a Historic
Evanston Abode



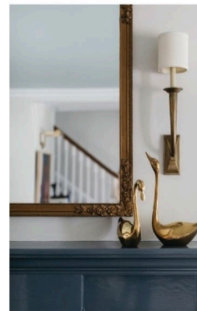
Clockwise from top left: The foyer creates visual interest with a console by Omph, ottomans by CR Laine and artwork by Zoe Bios Creative; lights by Air Mimos silk in Pearl Grey from Ann Sacks amps up the living room fireplace; details of the living room mantel, which is hand-painted in Ocean Floor by Benjamin Moore.



WHAT'S OLD IS NEW

Tackling what was then her first project in Evanston, interior designer Taryn Bickley transforms a historic early 1900s home into a stylishly updated family oasis.

BY J.P. ANDERSON
PHOTOGRAPHED BY MARGARET RAJIC



From top: Motic Beauregard grass cloth wallcovering by Bridget Beati from the Bradley showroom gives the mudroom serious pizzazz; the sunroom beckons with Robert Abbey reading lamps and chic Kravet sheers supported by Brimar acrylic cube rods.



THE CLIENT

Owners of a charming Evanston home built in the early 1900s, the couple executed a major remodel in 2013 to add more space and more rooms. But while the back of the house was fabulously finished, other parts of the home felt dated and untouched—including the front living room, staircase, foyer, sunroom and entryway, an ad hoc mudroom overflowing with their teenage son's hockey gear—so the pair turned to Bickley & Co Design to help make the space feel complete.

THE PRIORITY

"We spent a lot of time conjuring up ways to synchronize the two spaces," notes founder and principal Taryn Bickley of the home's finished and unfinished aspects. Top of the list: a face-lift for the sun porch; a complete rework of the entryway; an update of the rest of the first floor, including the stairs; an overhaul of the fireplace; and completing the half-finished upstairs laundry room—all with an unexpected mix of bold color and intriguing wallcoverings. "There's such charm within this neighborhood," says Bickley, "and it's easy to see how bringing some of that flavor into the tired bones of the house would create a thoughtful revival. However, they also wanted to infuse color, texture and style, and that felt new here."

RETREAT DESIGN



“THE ENTRYWAY IS REALLY A STUNNER—THE GRASS CLOTH JUST TOOK THE WHOLE ROOM TO A NEW LEVEL, AND IT PLAYS OFF THE FOYER SO WELL.”

—TARYN BICKLEY



THE CHALLENGE

Working with an older home can come with serious conundrums. Case in point: “The floors and walls were uneven, and our first millworker wouldn’t touch the entryway project,” notes Bickley. Thankfully, Kenrose Kitchen Cabinets stepped in to save the day. “They found a way to level and reinforce the entryway cabinets by making one end an inch taller than the other—it was truly a miracle because you really can’t tell. We also added in the paneling for the sun porch, which hid the uneven walls. You would never know the house is actually slanted.”

THE DETAIL

“The entryway is really a stunner,” enthuses Bickley. “The grass cloth [wallcovering] just

took the whole room to a new level, and it plays off the foyer so well. I also love the fireplace redesign. The original was so dated and boring—a basic white with a creamy tile that did nothing for the room. We really wanted to bring contrast to the space, and I think the whole area speaks to the heart of the home.”

THE OUTCOME

“The client loves the whimsy and charm of this house,” says Bickley proudly. “There is a balance within the rooms that inevitably highlights the louder nuances—like the art and wallcoverings—with the quieter places like the sun porch and living room. The accessories are also really personal and tactile; they invite you in to read, notice and touch.” ◉



DESIGN DETAILS

TYPE
Single-family home

LOCATION
Evanston

ARCHITECTURE
Petrick Architecture
petrickarchitecture.com

BUILDERS
HomeWerks
homeworksinc.net

INTERIORS
Bickley & Co Design
bickleyandco.com

MILLWORK
Kenrose Kitchen Cabinets
217.543.3395

PAINTERS
Laris Decorating Inc.
773.704.2155

STAIRS
Fox Valley Stair
foxvalleystair.com

RESOURCES

Ann Sacks
Fireplace tile
annsacks.com

Bradley
Entryway wallcovering by
Bridget Beari
bradleyusa.com

Martha Ceccio
Painting in sunroom
marthaceccio.com

Cement Tile Shop
Entryway tile
cementtileshop.com

Circa Lighting
Foyer pendant, fireplace sconces
circaighting.com

CR Laine
Sofa and ottomans
crlaine.com

Mimsie O'Hara Fabric Designs
Window coverings throughout
630.915.3043

Neybir
Various accessories
neybir.com

Oomph
Entryway console
oomphhome.com

Robert Abbey
Sunroom reading lamps
robertabbey.biz

Schumacher
Laundry room wallpaper
fschumacher.com

The Urban Electric Co.
Entryway pendant
urbanelectric.com

Zoe Bios Creative
Large artwork in foyer
zoebioscreative.com

Artwork by Michigan artist Martha Ceccio stars in the sunroom. Opposite page, from left: Blommen wallpaper in Marine by Schumacher lives up laundry duty; the revamped entryway is one of Bickley's favorite spaces.